

We are happy to consider requests for this publication in other languages or formats such as large print. Please call **01324 590886** (24hrs), fax **01324 590867** or email disability.department@nhs.net

Connections are not guaranteed and we recommend that you check your journey before setting off by visiting www.travelinescotland.com or calling **0871 200 22 33**. Calls cost 10p/min from BT landlines. Charges from other operators or mobiles may vary.

If you have any comments about your journey then please contact:

First Scotland East
Tel: **08708 72 72 71** www.firstgroup.com

NHS Forth Valley Travel Manager, Corporate Offices, 1st Floor Forth Valley Royal Hospital, Stirling Road, Larbert FK5 4WR or telephone **01324 567 443**.

Stub it Out!

Smoking is not permitted inside or anywhere in the grounds of Forth Valley Royal Hospital. This includes the area outside the main entrance, bus shelters and car parks.

Forth Valley Royal Hospital Travel Options

Rail Services Guide



taking care of your journey
taking care of you



Introduction

Welcome to your guide which shows you how to travel to Forth Valley Royal Hospital by rail. Larbert Rail Station is only a short bus ride with frequent services 6, 7 and 59 operating between Larbert Rail Station and Forth Valley Royal Hospital. Concessionary passes are valid for travel. Alternatively buy a PLUSBUS ticket or pay the driver.

In the centre of your guide you will find a map showing all direct rail services to Larbert Rail Station. If your service isn't shown then simply travel to one of the stations on the map then catch a direct train to Larbert Rail Station.



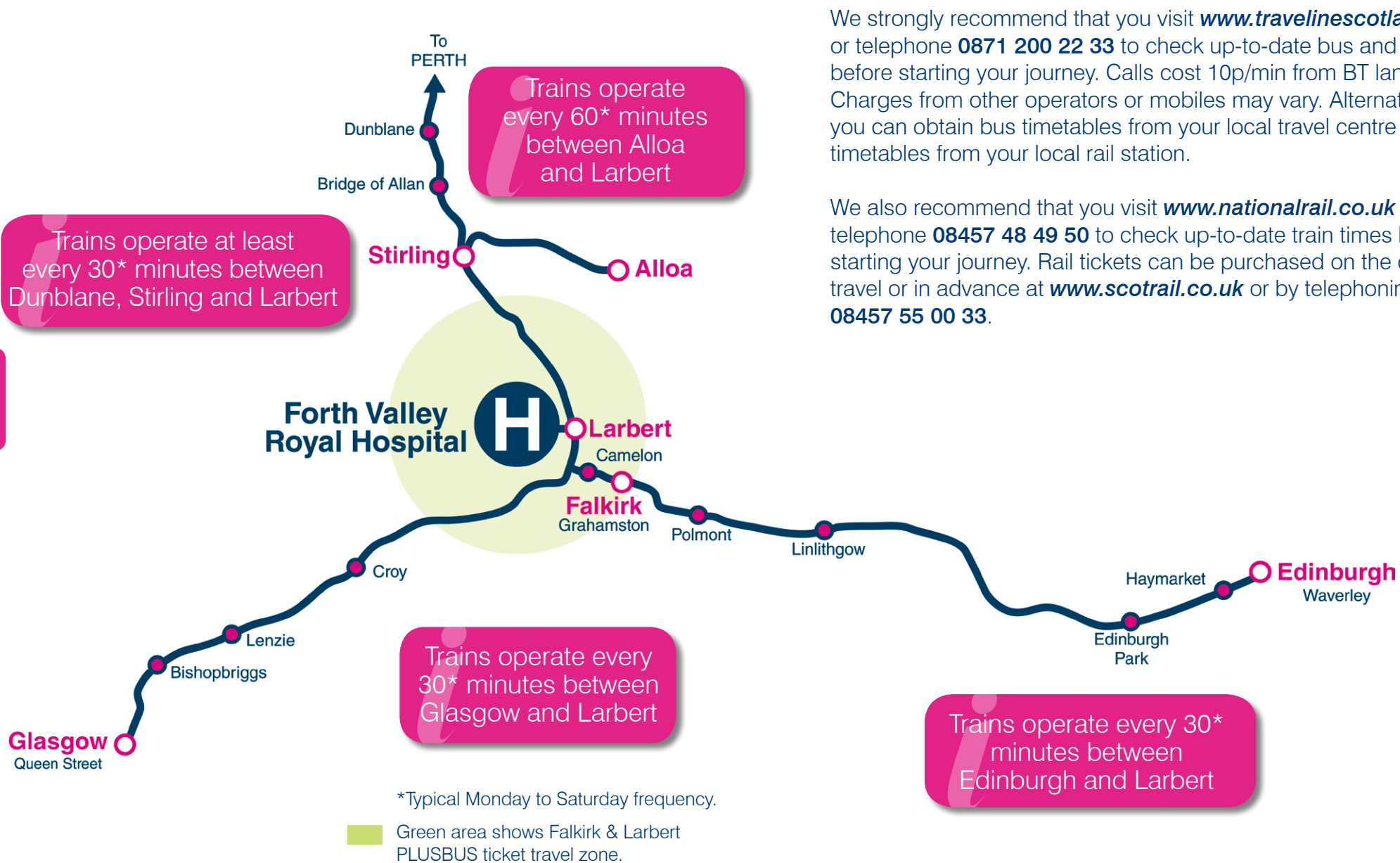
Are you travelling by train to Larbert or Falkirk railway stations?

Then buy a PLUSBUS ticket with your train ticket (at station or online) for bus travel on all services between the station and the Forth Valley Royal Hospital. Railcard discounts available. For details visit: www.plusbus.info

Larbert Rail Station is only a short bus ride with frequent services 6, 7 and 59 operating between Larbert Rail Station and Forth Valley Royal Hospital.



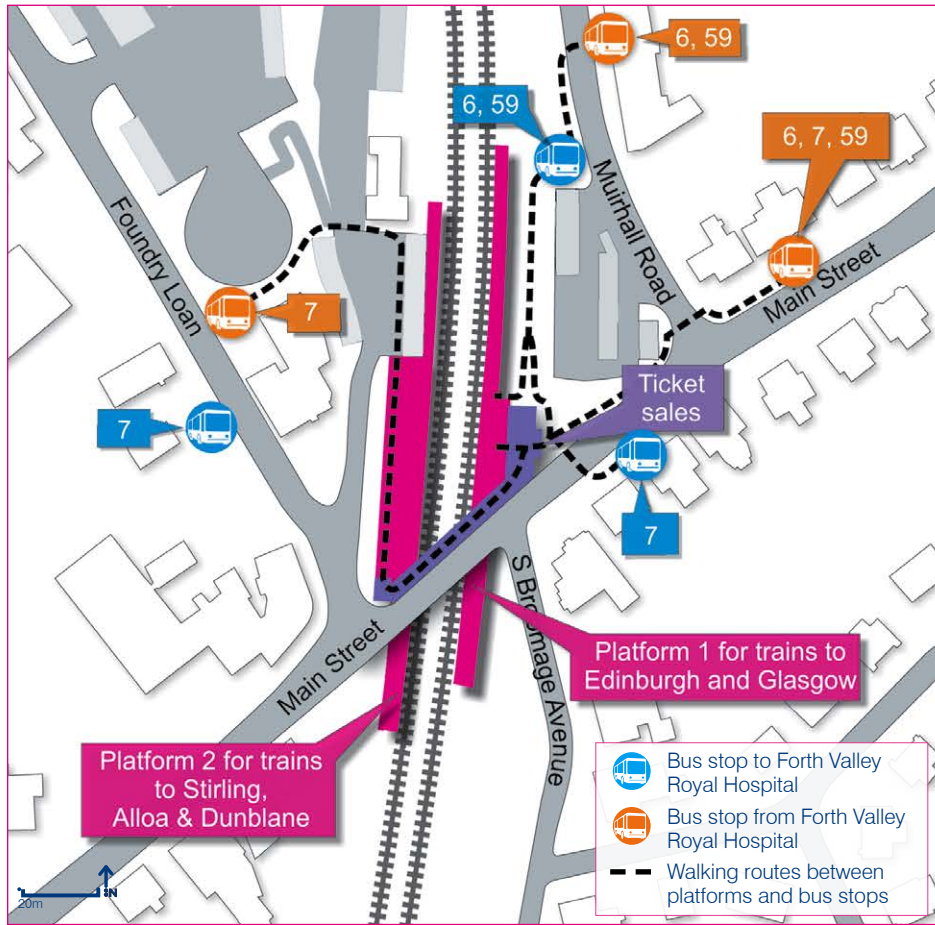
Rail routes to Forth Valley Royal Hospital



We strongly recommend that you visit www.travelinescotland.com or telephone **0871 200 22 33** to check up-to-date bus and rail times before starting your journey. Calls cost 10p/min from BT landlines. Charges from other operators or mobiles may vary. Alternatively you can obtain bus timetables from your local travel centre or rail timetables from your local rail station.

We also recommend that you visit www.nationalrail.co.uk or telephone **08457 48 49 50** to check up-to-date train times before starting your journey. Rail tickets can be purchased on the day of travel or in advance at www.scotrail.co.uk or by telephoning **08457 55 00 33**.

Larbert Rail Station



Bus Service	Provider	Frequency		
		Monday - Saturday Daytime	Evenings	Sunday
6	First	20	60	20-60
7	First	20	60	60
59	First	60	60	No Service

Forth Valley Royal Hospital site plan

