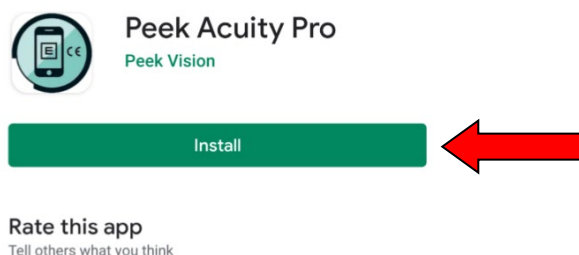


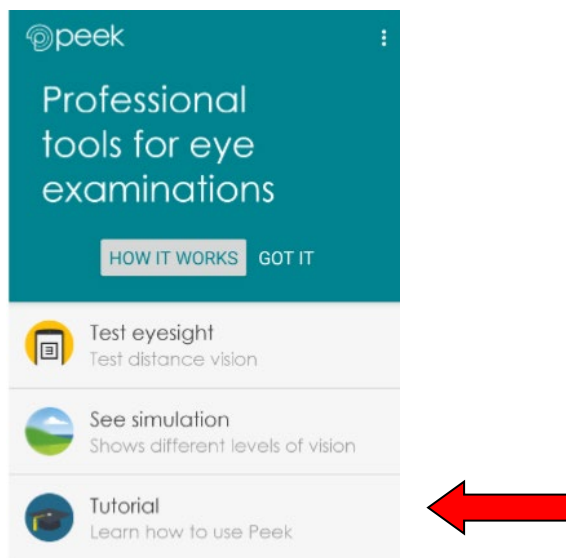
Peek Acuity Pro — Home Vision Testing Guide

- This test uses an **E** shape, which points in different directions and changes size to measure eye sight
- This app can be downloaded on Android devices via the [Google Play Store](#)

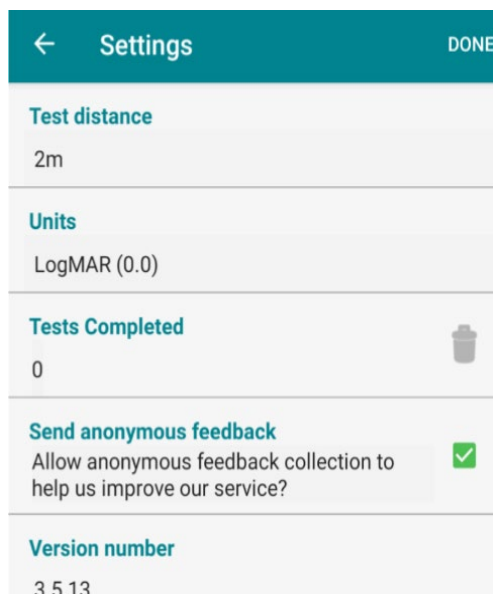
1. Search for 'Peek Acuity Pro' in the Play Store and click 'Install'



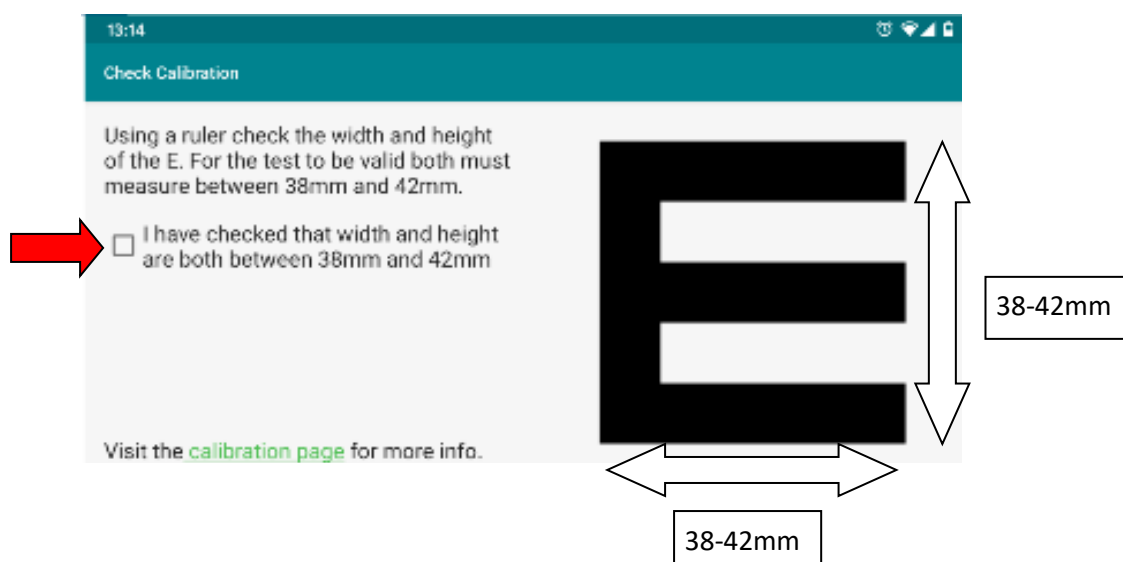
2. A written tutorial on how to use the app is available on the app's home screen. You can also access a video tutorial via YouTube <https://www.youtube.com/watch?v=Xw3qMLjdpfM>



3. Once you have seen the tutorial, return to the app home screen and select '**Test eyesight**'.
4. Set the *Test distance* as 2m. Do not change the *Units* from '**LogMAR(0.0)**'. Then select '**Done**'.



5. You will then need to calibrate the app – see instruction below.

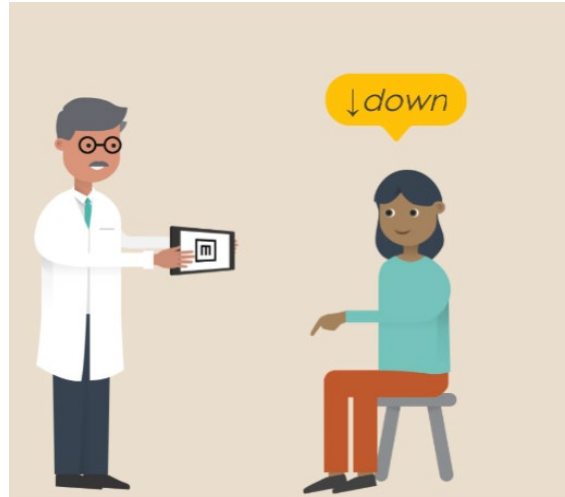


Once you have measured the E and each side measures between 38mm and 42mm, click on the box to start the Vision Test

6. This guide describes how to perform the test for children but the same procedure applies for adults. To perform the test:
- You need to be in a space where it is not too bright or too dark and that there will not be any sunshine or light bouncing off your device;
 - You need to be able to measure the test distances between your device and your child. Either measure it on the floor or have pre-cut pieces of string ready. You need to be able to measure 2m, 1m and 30cm;
 - To start, your child needs to sit/stand 2m away from the tablet/phone screen;
 - Ensure that you hold the device horizontally (landscape) and at your child's eye level;

- Cover the left or right eye depending on which eye you want to test first. If a hand is used to cover the eye you must ensure the child cannot see. Ideally use something opaque to cover the eye (e.g an eye patch or pirate patch);
- You may want to practice with both eyes together first in order to determine your child's confidence.

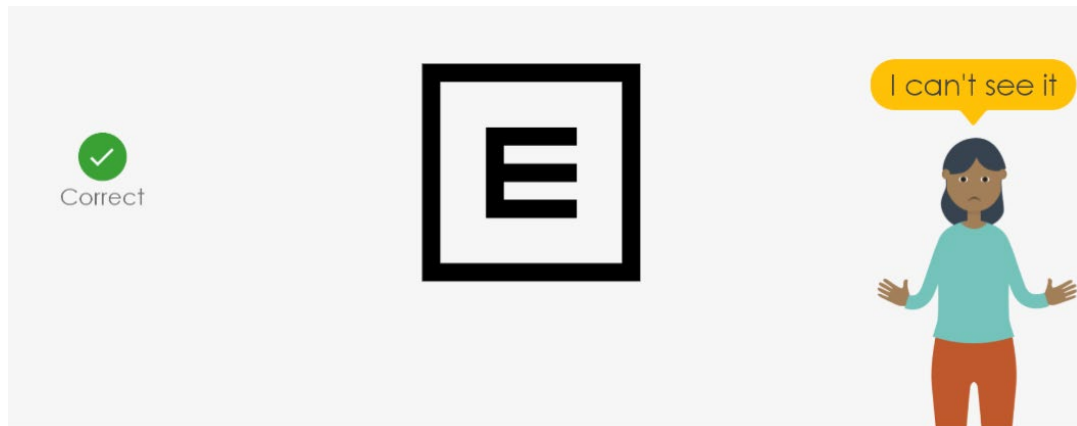
7. Ask your child to point in the direction that they think the legs of the E is pointing.



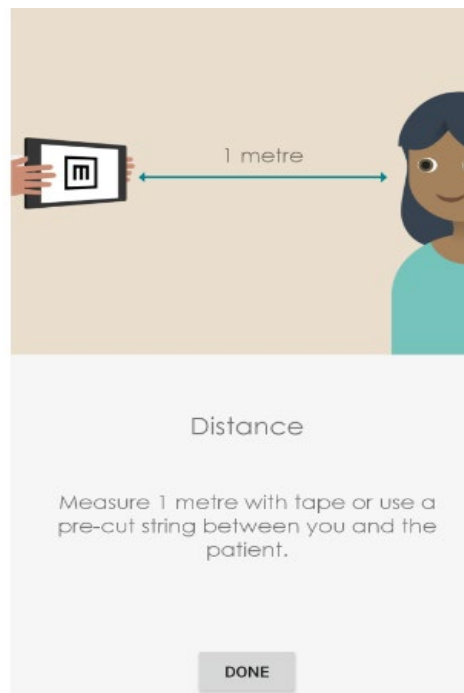
8. Swipe the screen in the direction that your child points. You do not need to check if they are correct.



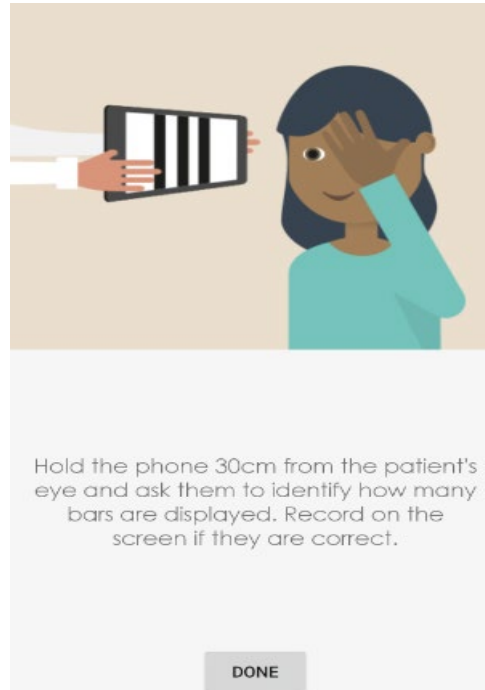
9. If your child is unable to see, **shake the device** and this will change the size and direction of the E.



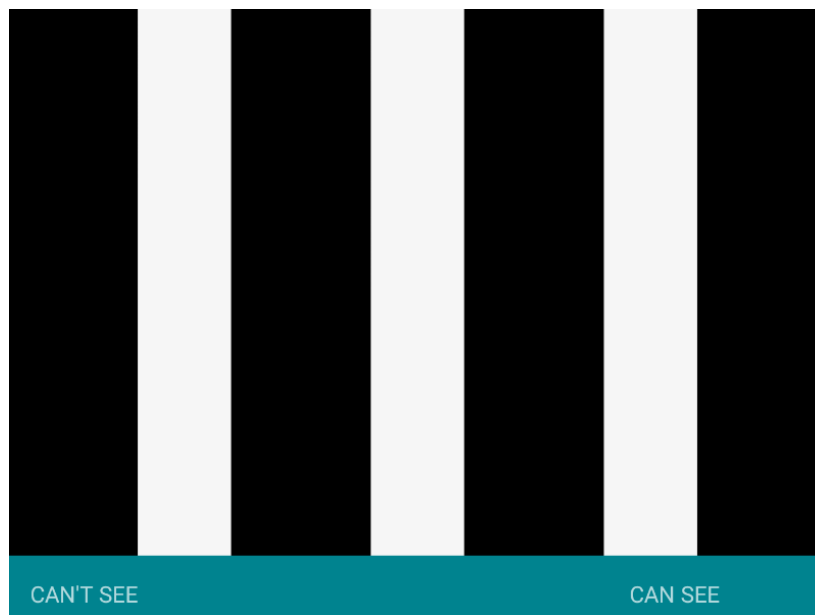
10. If your child is **still unable to see** the E, shake the screen 3 times and the app will instruct you to change the *Test distance* to **1m**. Use your **pre-cut 1m length of string**. Once the device is 1m from your child's face, click 'done'.



11. If your child is **able to see** the E at 1m instruct them to point in the direction they feel the E is pointing.
12. If they are **unable to see** the E at 1m shake the device 3 times and the app will change the *Test distance* to **30cm**. Use your **pre-cut 30cm length of string**.



13. Your child will be presented with vertical stripes – ask them to state whether they **Cannot see** or **Can See** the stripes and then press the appropriate button.



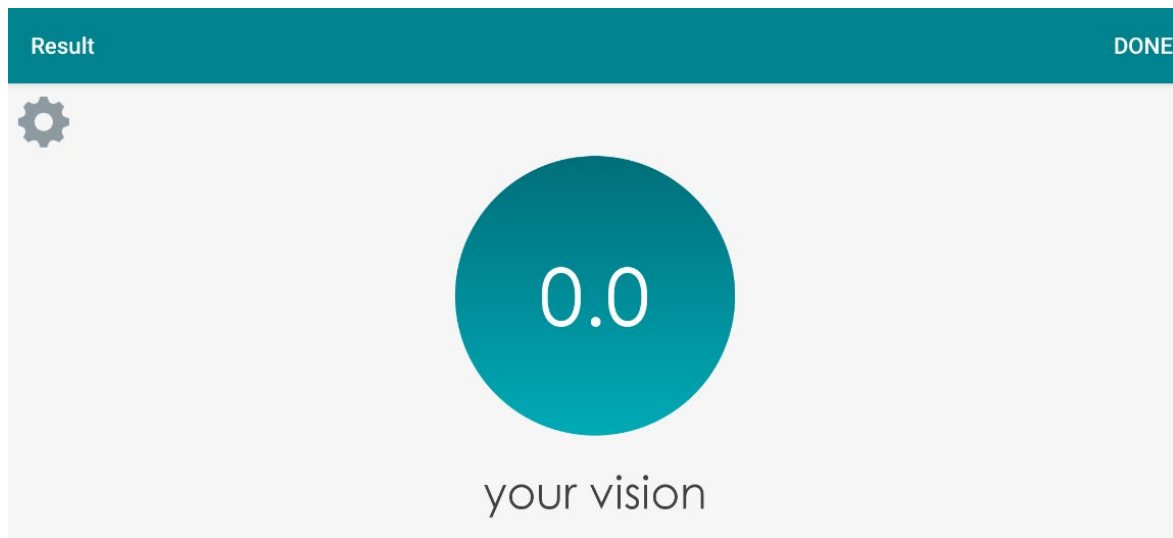
14. If your child **CANNOT SEE** the stripes, they will then be presented with a moving black stripe – ask them whether they **Cannot See** or **Can See** the moving stripe, then press the appropriate button.

15. If your child **CANNOT SEE** the moving stripe the app will switch on the device's light, hold the light directly in front of the eye – ask the your child if they Cannot See or Can See the light and then press the appropriate button.



NOTE: Be careful to ensure the other eye is completely covered

16. At the end of the Vision Test, you will be provided with a vision result.



Be sure to document the number in the blue circle (your child's vision) for the Right and Left eye separately.

17. Please write down the vision score for right and left eye, as this will be helpful for the eye specialist when you are reviewed by video call