



**Jemma Nisbet**

**Learning Disability Acute Liaison  
Services**

Information for People with Learning  
Disabilities and Carers

## What is this leaflet for?



The Learning Disability Acute Liaison service can help you when you come into hospital.

## Who is the Learning Disability Acute Liaison Nurse?

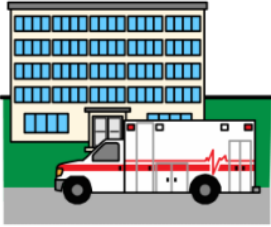


I help Doctors and Nurses understand what help you need in hospital.



I am part of NHS Forth Valley Learning Disability Services and work with other professionals.

## What do I do?



I help you when you come into hospital.



I provide easy read information for things like scans and tests.



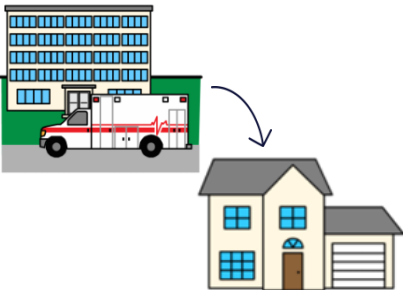
Recommend any changes that need to be made.



Speak to hospital staff about what you need.



Provide education for hospital staff.



Help staff plan for going home.

## When should I contact the LD acute liaison nurse?



As soon as you find out that you have to come in to hospital.

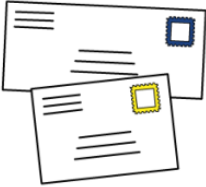


As soon as possible on emergency admission.



This means I can come and help you.

## How can I contact you?



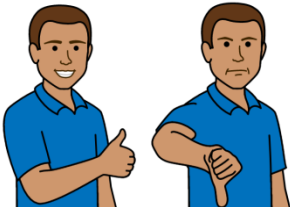
Jemma Nisbet, LD Acute Liaison  
Nurse  
Forth Valley Royal Hospital, Stirling  
Road, Larbert  
FK5 4WR



01324 566368



[jemma.nisbet@nhs.scot](mailto:jemma.nisbet@nhs.scot)



You can tell me if your time in  
hospital was good or bad on Care  
Opinion

<https://www.careopinion.org.uk/tellyourstory>